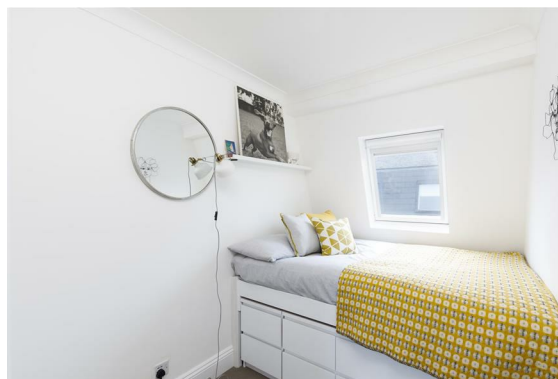


Wynnes Mews

Hove





We know just the place...



This beautiful two-bedroom mews house is hidden away in the middle of the incredibly popular Poets Corner, with easy access to many amenities on your doorstep.

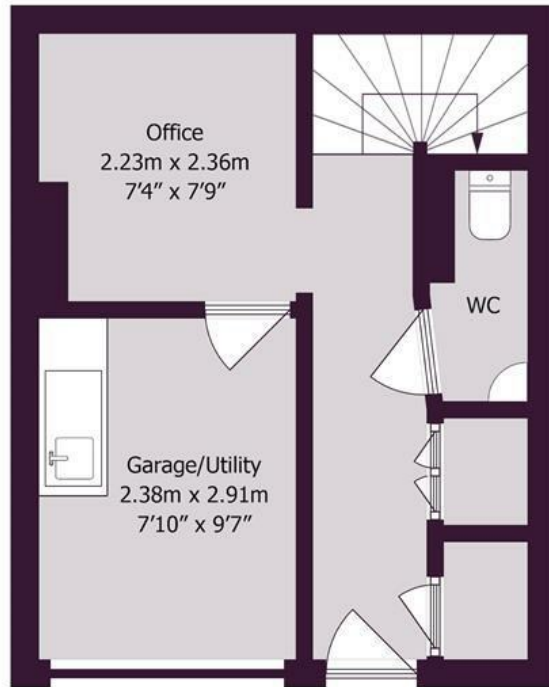
As you enter, the hallway allows access to all rooms. The spacious open plan reception room is located on the first floor, with plenty of space for dining and entertaining, with the modern kitchen offering plenty of worktop space and integrated appliances. Double doors lead off the reception onto the West-facing private balcony, which runs the width of the house and offers a wonderful space to relax in the sun.

Two bedrooms can be found on the second floor with a pretty family bathroom offering all modern fittings. An incredibly useful garage can be found on the ground floor, which has plenty of space for storage, as well as a separate area for a home office should it be required. Also to the ground floor is a cloakroom WC and storage cupboard.

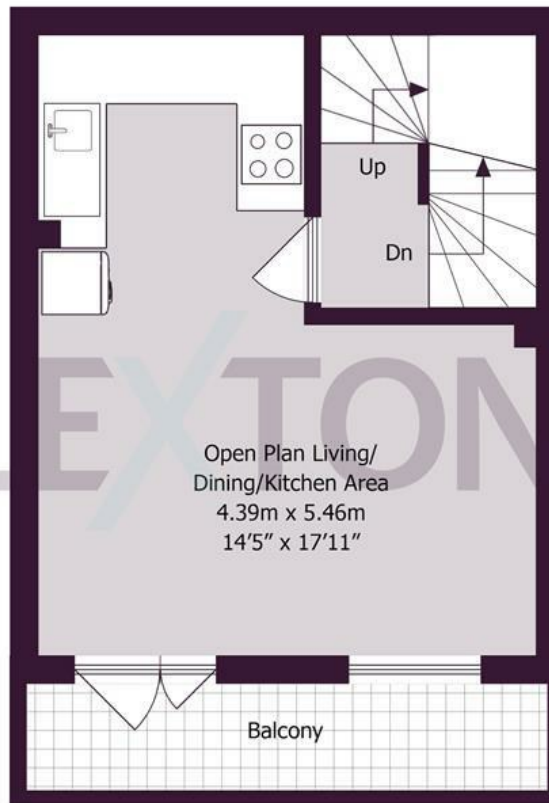
Wynnes Mews is located off Montgomery Street and is close to Stoneham Park, Aldrington train station and plenty of gastropubs and coffee shops. This area is very popular with anyone that may need to commute to London, but also wants easy access to Hove seafront and its many amenities.



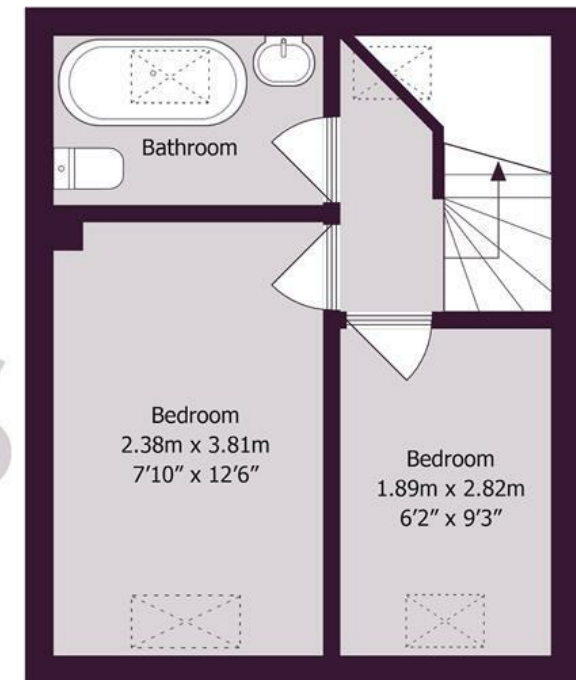
Ground Floor



First Floor



Second Floor



Approximate gross internal floor area 72 sq m/ 775 sq ft

Whilst every care has been taken to ensure accuracy, dimensions are approximate and for illustrative purposes only.

Created by Property Photography UK for Lextons. All rights reserved.

Meet us here...
174 Church Road
Hove
BN3 2DJ

We aim to make our particulars both accurate and reliable. However they are not guaranteed; nor do they form part of an offer or contract. If you require clarification on any points then please contact us, especially if you're traveling some distance to view. Please note that appliances and heating systems have not been tested and therefore no warranties can be given as to their good working order.



LEXTONS.co.uk